



ویرا پرداز آروین پاسارگاد

با مدیریت خانم مهندس احمدی



جهت مشاوره

با کارشناسان فنی

با ما در ارتباط باشید



021 - 91001377

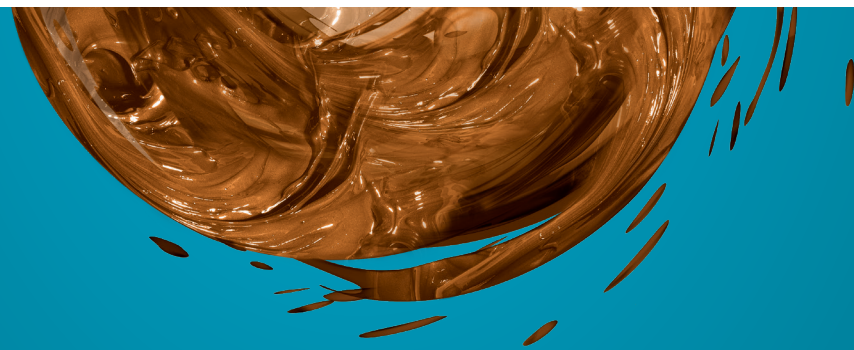


0935 125 90 98



TOTAL
LUBRICANTS

Core Grease Range



TOTAL

Committed to Better Energy

MULTIS COMPLEX EP 2

Lithium complex grease

Designed for the lubrication of a variety of applications in all types of equipment and high operating temperatures.

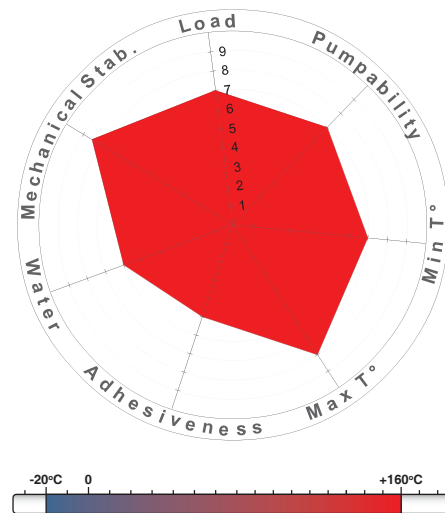
Suitable as a general-purpose grease for industrial applications requiring a NLGI 2 grade Extreme Pressure grease.

Advantages

- The range of applications for this product are extensive, allowing stock rationalization and simplification of machine maintenance.
- MULTIS COMPLEX EP 2 fulfills the requirements of most automotive Original Equipment Manufacturers.

Applications

- Wheel bearings, conveyors, electric motors, chassis, fixed plant, high temperature, general greasing, mobile plant.



MULTIS COMPLEX HV 2

Lithium complex grease

A multi-purpose grease, specifically formulated for the lubrication of all types of bearing applications including slide, ball, roller and wheel bearings.

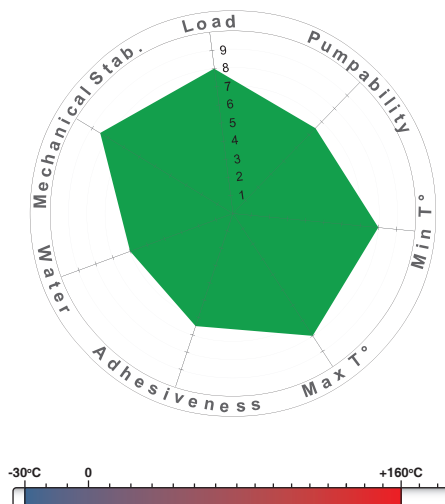
A medium viscosity Extreme Pressure grease.

Advantages

- MULTIS COMPLEX HV 2 forms a lubricating film which is durable, and resistant to water, temperature variations and contamination.
- This product has a higher base oil viscosity.

Applications

- Wheel bearings, conveyors, chassis, fixed plant, high temperatures, general greasing, mobile plant.



MULTIS COMPLEX XHV 2 MOLY

Premium Mining, Off-Road, and Industrial Lithium complex grease, containing a high viscosity base oil and 5% solid lubricants

A specially designed grease to handle the lubrication demands of equipment used in the mining industry

This product contains 3% MoS₂ and special friction modifiers

This product is recommended for the lubrication of slow-moving bearings, chassis parts, gears and couplings in automotive and industrial applications.

Advantages

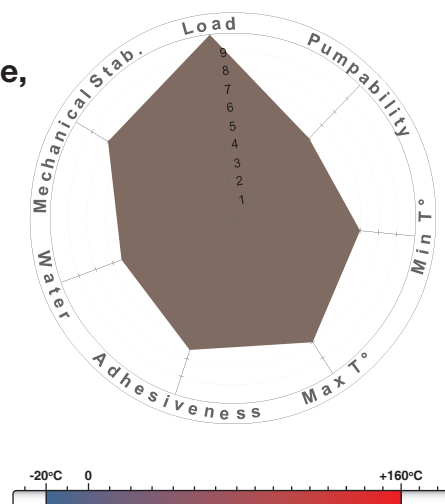
- Suitable for a variety of equipment allowing optimization of products on site.
- Provides longer lubrication intervals thanks to its enhanced mechanical stability when compared to simple lithium greases.

Applications

- Pins and bushes, mobile and fixed plant, high temperatures, plain bearings and slow bearings under severe or shock loads.

Suitable for:

- CAT/Bucyrus SD 4711
- P&H 520
- Liebherr greases specifications
- CAT multi-purpose 3% moly requirement



CERAN XM 220

Water-resistant calcium sulfonate complex grease

A grease that is suitable for the lubrication of all kinds of components that are subject to high loads, shocks or working in conditions where the grease is in frequent contact with water (including seawater).

Suitable for the lubrication of continuous casters and rolling mills in steel plants, bearings in wet and dry (felt rolls) sections of paper mills and all industrial applications under severe conditions.

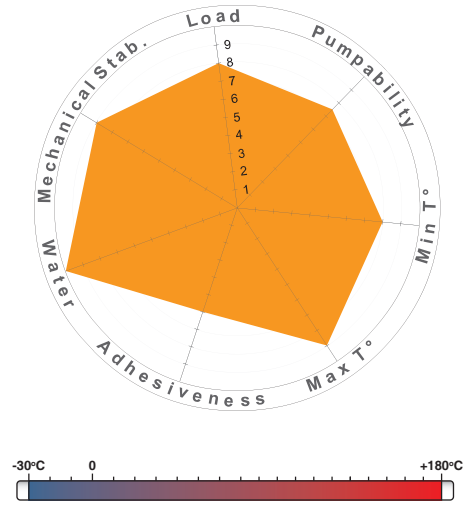
This product is suitable for use in centralized greasing systems.

Advantages

- CERAN XM 220 has outstanding performance even at high nDm where it maintains all product benefits such as corrosion protection, bearing life, high loads, and thermal resistance.
- This product has excellent anti-oxidation and anti-corrosion properties thanks to the excellent behavior of the calcium sulfonates, even in the presence of seawater.

Applications

- Wheel bearings, conveyors, electric motors, chassis, wet environments, fixed plant, extreme temperatures, general greasing, mobile plant.



CERAN XM 220 MOLY

Calcium sulfonate complex grease containing 5% solid lubricants

Recommended for the lubrication of slow-moving bearings including highly loaded rolling element bearings subject to shock loads and high temperatures.

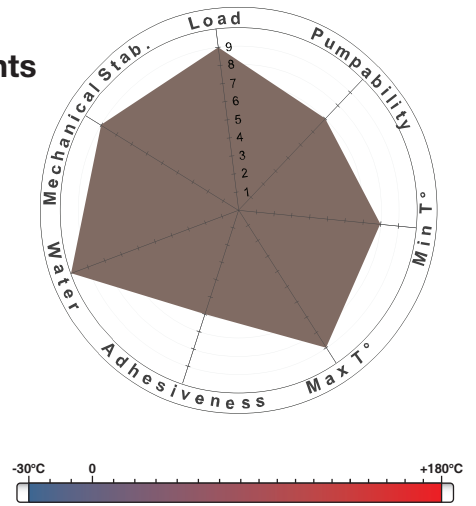
CERAN XM 220 MOLY is suitable for the lubrication of all kinds of components subject to high-loads, shock loads and working in conditions where the grease is in frequent contact with water (including seawater).

Advantages

- This product has remarkable load resistance thanks to its naturally high extreme pressure and anti-wear properties as well as the presence of MoS₂.
- CERAN XM 220 MOLY has extraordinary water resistance - no significant loss of consistency is observed even with high amounts of water entering the grease.

Applications

- Pins and bushes in wet environments, extreme temperatures, plain bearings and slow bearings under severe or shock loads.



Nature / Soap Type	Greases Key Range	NLGI Grade	Base Oil Viscosity @ 40°	Solids	Operating Temperature	Application					Colour	Market Segment	Pack Size
						Extreme Pressure	Water Resistance	High Temperature	Wheel Bearings	Speed Property			
Lithium Complex	MULTIS COMPLEX EP 2	2	165		-20 to 160°C	Med to High		20kg, 180kg	
Lithium Complex	MULTIS COMPLEX HV 2	2	340		-30 to 160°C	Slow to Med		20kg, 180kg	
Lithium Complex	MULTIS COMPLEX XHV 2 Moly	2	680	3% MoS ₂	-20 to 160°C		Very Slow		20kg, 180kg	
Calcium Sulfonate Complex	CERAN XM 220	1.5	220		-30 to 180°C	Slow to High		20kg, 180kg	
Calcium Sulfonate Complex	CERAN XM 220 MOLY	1.5	220	5% MoS ₂	-30 to 180°C		Very Slow to Slow		20kg, 180kg	



Extreme Pressure



Water Resistance



High Temperature



Wheel Bearings



Speed Property



Automotive



On-Road



Off-Road



Mining (mobile)



Mining (fixed plant)



Industrial

A major player

With our production, supply chain and commercial presence in more than 150 countries, we deliver a full range of lubricants.

Support and partnership

Thanks to local technical presence, we provide a high level of service to optimize your Total cost of Ownership.

References & OEMs

TOTAL Lubricants cooperates with equipment manufacturers to create high-technology products for optimal performance and production of your machinery.

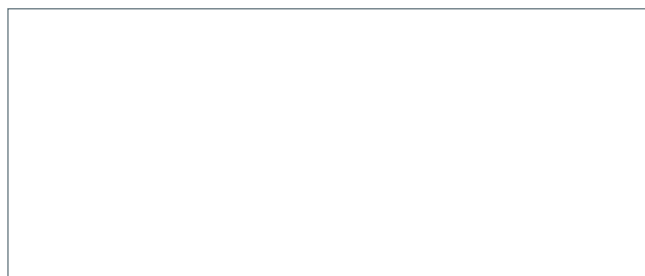
5 good reasons for choosing TOTAL

Innovation & Research

TOTAL invests in biotechnologies to find the most suitable components to reach energy efficiency through formulations designed in our Research Centers.

Quality and environment

TOTAL Lubricants ISO 9001 certification is the guarantee of a long term commitment to quality. From the initial design stage, our R&D teams seek to develop products that minimize toxicity risks and environmental impact.



Total Oil Australia

1800 TOTALOIL (1800 868 256)

Safety Data Sheets are available at quickfds.com

totaloil.com.au



TOTAL

Committed to Better Energy



ویرا پرداز آروین پاسارگاد

با مدیریت خانم مهندس احمدی



جهت مشاوره

با کارشناسان فنی

با ما در ارتباط باشید



021 - 91001377



0935 125 90 98